

Tools required for installation are:

1. Drill/driver, #2 phillips bit, and min. 4 inch magnetic bit adaptor
2. Metal cutting saw, shears, or plasma cutter
3. Flat metal file (if necessary)

Contents of this package are:

1. Cover assembly
2. Frame assembly with interior closure plate
3. Frame Assembly Skirt
4. Base Mounting Plate
5. 10-32 x 1/2" PFH machine screws
6. 6-32 x 1/2" PFH machine screws w/washers

Preparations Instructions:

P1



Prep 1

Remove the Cover assembly and the Frame assembly with Base Mounting Plate from shipping box

P2



Prep 2

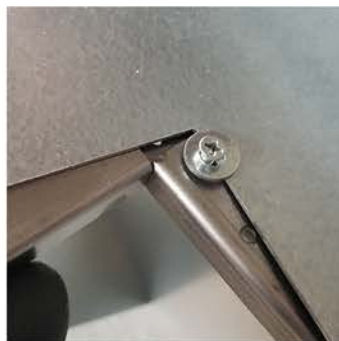
Remove the Closure Plate from inside of the Frame assembly, and separate the Frame from the Base Mounting plate by removing (2) screws used for shipping

Installation Instructions:



Step 1

Select desired location for access door location. Mark the area to be cut out 1" larger than the access door to be used (i.e., a 6x 10 door would require a hole 7"x 11") Cut out the hole with a metal cutting saw, shears, or plasma cutter. Use metal file to remove any metal burrs of the cut edge



Step 2

Loosen, but do not remove, the (2) 6-32 PFH set screws with washers that are in the opposite corners of the Base Mounting Plate. Insert the Base Mounting Plate into the duct, and tilt to allow the set screws to ride on the edge of the duct with the washer on the outside of the duct. Center in the opening and tighten the set screws to hold the Base Mounting Plate in place

Installation Instructions (continued):



Step 3

Center the Frame assembly over the previously installed Base, and connect to the Base with the 10-32 x 1/2" Phillips flat head screws. Install with the side marked "Up A" at the top. When not possible when installing a rectangular door on a vertical run, install with the side marked "UP B" at the top (so lanyard is not on top)

Step 4

Re-install the Gasket Plate assembly into the Frame by inserting the assembly vertically until it is resting against the back of the opening, then push the plate in to allow the silicone gasket to fold in, and the top and bottom spring latches to engage into the holes



Step 5

Install 2 layers of a tested "duct wrap system" around the frame by cutting each layer of wrap with a hole 1-1/2 inches larger than the door size (i.e., for a 6"x 10" door, cut the hole in the wrap at 7-1/2"x 11-1/2") and install over and tight to the outside of the Frame, without seams. Place the frame Skirt on top of the wrap, centered around the Frame, and tuck under the lip of the frame to hold in place

Step 6

Take the Cover assembly, center it over the frame, push and compress down against the duct wrap and frame skirt and attach the cover to the frame with the 10-32 x 1/2" phillips flat head machine screws provided, into the captive nuts of the frame



Step 7

Close the cover and tighten the captive screws to complete the installation

Description	Opening Size	Min. Duct Dimension	Part #
Easy Access Door 6 in. x 6 in.	7 in. x 7 in.	9 in.	EA66
Easy Access Door 6 in. x 10 in.	7 in. x 11 in.	9 in.	EA610
Easy Access Door 8 in. x 12 in.	9 in. x 13 in.	11 in.	EA812
Easy Access Door 12 in. x 12 in.	13 in. x 13 in.	15 in.	EA1212
Easy Access Door 12 in. x 16 in.	13 in. x 17 in.	15 in.	EA1216
Easy Access Door 14 in. x 18 in.	15 in. x 19 in.	17 in.	EA1418
Easy Access Door 20 in. x 20 in.	21 in. x 21 in.	23 in.	EA2020

Warranty and Limited Remedy, This product will be free from defects in material and manufacture for a period of ninety (90) days from date of purchase. **FIRESHIELD MAKES NO OTHER WARRANTIES INCLUDING, BUT NOT LIMITED TO , ANY IMPLIED WARRANTY OR MERCHANTABILITY OR FITNESS FOR A PARTICULAR PURPOSE.** User is responsible for determining whether the FireShield product is fit for a particular purpose and suitable for user's method of application. If this FireShield product is proved to be defective within the warranty period stated above, your exclusive remedy and FireShield's sole obligation shall be, at FireShield's option, to replace or repair the FireShield product or refund the purchase price of the product.

Limitation of Liability. Except where prohibited by law, FireShield will not be liable for any loss or damages arising from the use of this FireShield product, whether direct, indirect, special, incidental, or consequential, regardless of the legal theory asserted, including warranty, contract, negligence or strict liability.